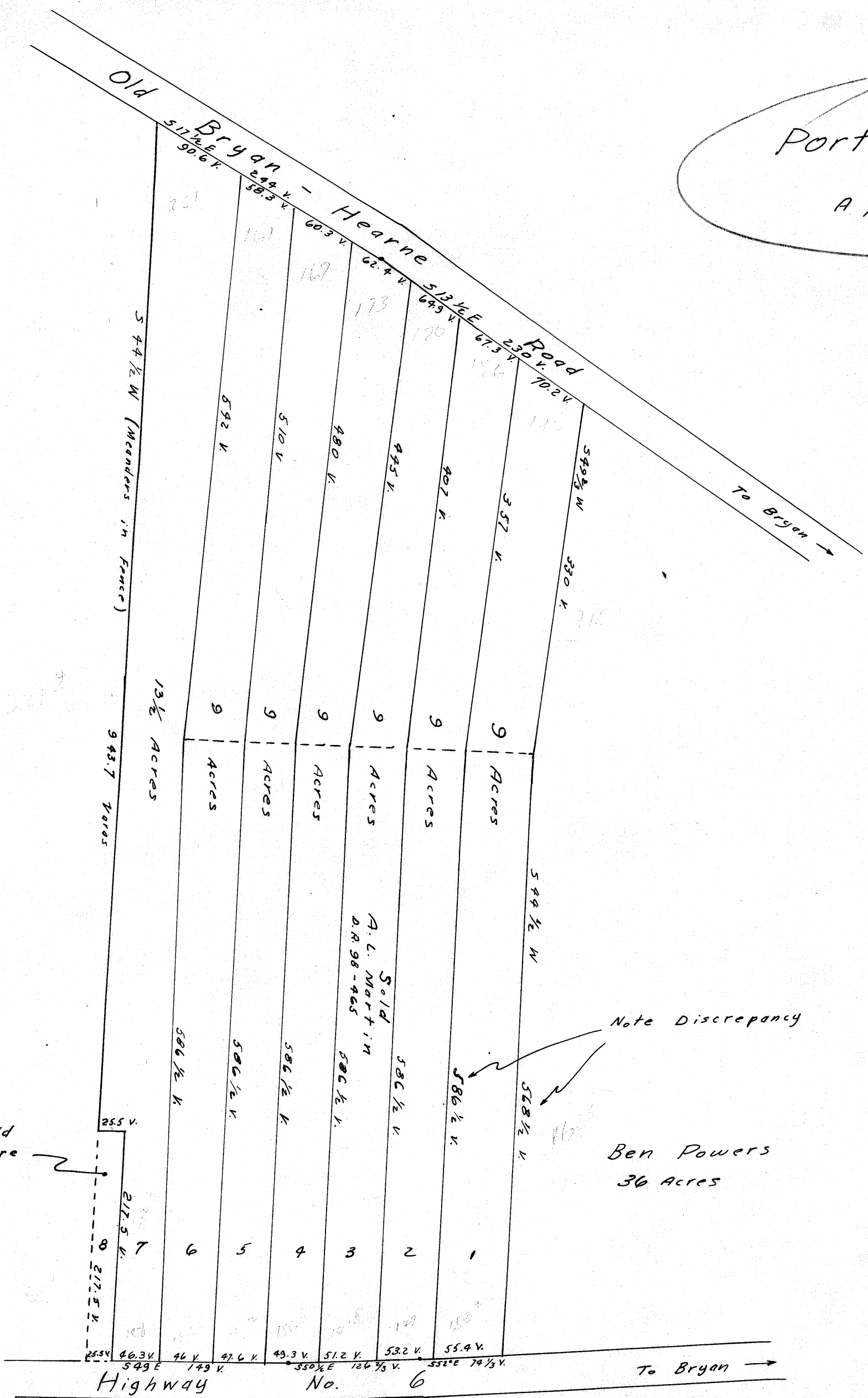


Porter's (Morvin M.) Addition
 A partial subdivision of an 86 Acre Tract
 in S.F.A. #10, Abst. #63

D.R. 100 Page 616

Dec. 27, 1938

Scale: 1" = 100 Varas = 277.77 ft.



one (1) Acre Sold
 Mrs. Ruth Le Fayre
 D.R. 99, Page 260

Note Discrepancy

Ben Powers
 30 Acres

294

copy on base and tabs